



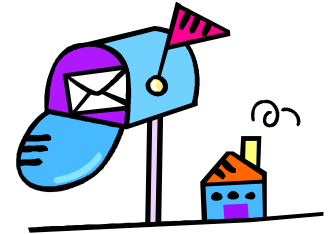
Are you on TennCare? And, did you use to get SSI checks? Here's what to do to help keep your TennCare.

Tennessee wants to cut more people off TennCare this winter and spring. The people TennCare wants to cut off have disabilities, or are over 65 or are blind. And, they used to get SSI checks (Supplemental Security Income) from Social Security. But they don't get SSI now.

Did you use to get SSI and are you still on TennCare? You may have the right to keep TennCare.

Here's what you should do now to try to keep your TennCare.

1. Make sure the address DHS has for you is right. DHS needs your right address to tell you how to keep TennCare. Even if your address hasn't changed, do this now:



Write or fax or go to the DHS office in your county. Give them your right address in writing.

Keep a copy with the date you gave it to them. What if you don't know the DHS address, fax or phone number? Then:

- Check the phone book, OR
- Go on the internet to: www.tennessee.gov/humanserv/st_map.html, OR
- Call the Family Assistance Service Center at **1-866-311-4287**. This is a free call. You may have to wait a long time to talk to someone. They can help you change your address. Or, they can tell you how to write, fax or find your DHS office.

2. Also send your right address **to the TennCare Bureau** . Send it to TennCare at P. O. Box 22630, Nashville, TN 37202. Keep a copy with the date you sent it.



3. Do you get a Social Security check now? Then also make sure Social Security has your right address. TennCare sometimes uses the address Social Security has for you.

- Call **1-800-772-1213**, OR
- Go on the internet to: <https://secure.ssa.gov/apps6z/ICOA/coa001.jsp>

4. Has your income gone down since you lost SSI? Then **apply for SSI again**. For example, you may have lost income if your husband or wife died. Or, you may have lost your job.

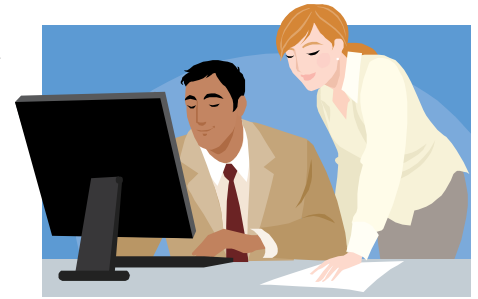
5. Watch for a letter from DHS in your mail.

It may be weeks before you get a letter. What you should do then depends on what the letter says:

1. Your letter may have pages for you to fill out. These pages are called a "request for information" or "RFI"). Try to fill the pages out and send them in. If you don't, you will lose your TennCare. Do you **need extra help with this?** Is it because you have health problems or learning problems or problems with your nerves? Then write on the first page, "I need extra help." Then tell what kind of health problem, learning problem or nerve problem you have.



2. If you get a letter that says your TennCare will stop, you can appeal. Say you want to keep your TennCare during your appeal. Tell them why you think they are wrong. Do you **need extra help with this?** Is it because you have health problems or learning problems or problems with your nerves? Then tell them, "I need extra help." Also, say what kind of health problem, learning problem or nerve problem you have.



If I lose my TennCare, are there other ways to get health care?

Yes. Do you qualify for a nursing home? You can apply for the Home and Community Based Services Waiver (HCBS). Getting on this Waiver gives you TennCare.

- Call 1-866-836-6678, for your local Area Agency on Aging and Disability. OR
- Go on the internet to: <http://www.state.tn.us/tenncare/long-elderly.html#2>

The CoverTennessee programs are another type of state health insurance. For example, AccessTN helps people who have been turned down for health insurance. CoverKids helps children. Find out if these programs can help you.

- Call 1-866-CoverTN (1-866-268-3786), OR
- Go on the internet to: <http://www.covertn.gov/>

Who may lose TennCare?

People who stopped getting SSI payments after 1987. This includes:

- People who lost SSI after 1987 when their Social Security disability or retirement checks started.
- People who got both SSI and Social Security but lost SSI after 1987, when Social Security went up.
- Children with disabilities who got SSI in the hospital but lost SSI after going home. Some children who were in the NICU when they were born got SSI but don't know it.
- Children with disabilities who got SSI, but lost it after 1987 when their parents earned too much.
- People with disabilities who want to work. But, they can only work if they have medicine, treatment or equipment from TennCare.
- Widows or widowers over 50 who lost SSI after 1987 because they got widow's or widower's Social Security payments.
- People with disabilities who got SSI before they were 22 and then lost SSI when they got Social Security because a parent died or could not work.
- People who lost SSI payments because Social Security says they are no longer disabled.



They are cutting these people off TennCare because the *Daniels* lawsuit is ending.



In 1987, a court said they can't cut you off TennCare when your SSI ends. They must first check to see if you qualify for TennCare without SSI. This was the *Daniels* lawsuit. Since then, everyone who lost SSI has kept their TennCare. That's about 150,000 people.

But now, DHS is going to look at each person to see if they can keep getting TennCare. If you don't qualify, they will cut off your TennCare. The court says that is now okay.



This fact sheet is not meant to take the place of legal advice.
It was prepared by the Tennessee Justice Center and the Legal Aid Society of Middle Tennessee and the Cumberlands.